

oscar & oscar tondo



ALUMINIUM RADIATORS



[®] **GLOBAL** 
R A D I A T O R I

A tall, vertical radiator is mounted on a white wall. To the left is a window showing a view of a canal and buildings. In front of the radiator is a woven basket. To the right is a tall giraffe sculpture. The floor is light-colored wood or tile.

oscar tondo

Simple and straightforward design to implement a technological heart: high thickness of the water channel, an exclusive welding process to fuse die-cast and extruded aluminum.

Oscar is the concrete answer to the public spaces, hotels and private needs. Is the result of the Global continuous technological and aesthetic research.

GLOBAL provides a 10 year warranty from the production date

(stamped on the side of each sections)
The conventional warranty grants the sole right to free replacement of the radiator which, due to defects originating from defects in material or workmanship, is not fit for purpose or its ordinary intended use. Replacement radiators shall be delivered free of charge to the retailer who sold the radiator to the end customer or his installer.

The warranty is valid on the condition that the installation and the system to which the product is connected are performed by qualified/authorised personnel to top workmanship standards and in compliance with the regulations and requirements of the sector in force; it is also valid on the condition that there has been full compliance with warnings and instructions for proper installation, use and maintenance of the product indicated in the technical documentation under the paragraph entitled *correct installation, use and maintenance instructions*, available and downloadable from the **TECHNICAL INFO** section on the globalradiatori.it website. The warranty is regulated by further conditions indicated in the technical catalogue and the **CONVENTIONAL WARRANTY** section on the globalradiatori.it website.



HIGH THERMAL OUTPUT Guaranteed by certification, according to the norm EN 442, from the *Politecnico* in Milan. The high thermal output allows less bulky radiators to be installed.

ENERGY SAVING WITH MAXIMUM COMFORT With the Global radiators the regulation of the temperature is easy and inexpensive. An ideal temperature for every environment according to personal needs is rapidly achieved.

VERY LONG DURATION Thanks to the high quality of the material, that gives the maximum guarantee of resistance and duration. The double protection in the "anaphoresis-bath" followed with epoxy power enameling guarantees a perfect and durable finish.

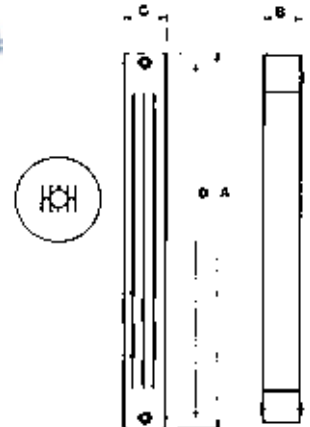
EASIER INSTALLATION Due to the lightness of the aluminum and the sectional elements that allow greater ease and flexibility of installation.

CERTIFIED QUALITY AND ENVIRONMENTAL The ICIM certified on 1994 (norm ISO 9001:2000) the Quality System and on 2001 (norm UNI EN ISO 14001) the System of Environmental Management.

model	dimensions mm				Ø connec- tion	dry weight approx. Kg	water content litres	heat output EN 442		exponent n	coefficient Km
	A	B	C	D				ΔT 50°C	ΔT 30°C		
	overall height	width	depth	pipe centres				Watt	Watt		
OSCAR 2000	2046	80	95	2000	1"	3,86	0,76	321	161	1,35280	1,61490
OSCAR 1800	1846	80	95	1800	1"	3,53	0,69	297	148	1,35295	1,48966
OSCAR 1600	1646	80	95	1600	1"	3,18	0,62	271	136	1,35310	1,36136
OSCAR 1400	1446	80	95	1400	1"	2,80	0,56	245	123	1,35325	1,23096
OSCAR 1200	1246	80	95	1200	1"	2,43	0,49	218	109	1,35340	1,09584
OSCAR 1000	1046	80	95	1000	1"	2,05	0,42	190	95	1,35355	0,95514
OSCAR 900	946	80	95	900	1"	1,99	0,41	175	88	1,34630	0,90160
OSCAR TONDO 2000	2046	80	95	2000	1"	3,86	0,76	321	161	1,35280	1,61490
OSCAR TONDO 1800	1846	80	95	1800	1"	3,53	0,69	297	148	1,35295	1,48966
OSCAR TONDO 1600	1646	80	95	1600	1"	3,18	0,62	271	136	1,35310	1,36136
OSCAR TONDO 1400	1446	80	95	1400	1"	2,80	0,56	245	123	1,35325	1,23096
OSCAR TONDO 1200	1246	80	95	1200	1"	2,43	0,49	218	109	1,35340	1,09584
OSCAR TONDO 1000	1046	80	95	1000	1"	2,05	0,42	190	95	1,35355	0,95514
OSCAR TONDO 900	946	80	95	900	1"	1,99	0,41	175	88	1,34630	0,90160

* 1 Watt = 0,863 Kcal/h

The heat output is certified by the Institute of engineering *Politecnico* in Milano according to the norm EN 442.



EXAMPLE FOR A DIFFERENT ΔT FROM ΔT 50°C

If you need to know a radiator heat output (P) with different ΔT from Δt 50°C, use the following characteristic equation: $P = Km \cdot \Delta T^n$

Example for the 1600 model with $\Delta T = 60^\circ C \rightarrow P = 1,36136 \cdot 60^{1,35310} = 347$ Watt

EXAMPLE OF HEAT OUTPUT READINGS WITH DIFFERENT ΔT FROM ΔT 50°C

model	ΔT 20°C	ΔT 25°C	ΔT 30°C	ΔT 35°C	ΔT 40°C	ΔT 45°C	ΔT 50°C	ΔT 55°C	ΔT 60°C
OSCAR 2000	93	126	161	198	237	278	321	365	411
OSCAR 1800	86	116	148	183	219	257	297	337	379
OSCAR 1600	78	106	136	167	200	235	271	308	347
OSCAR 1400	71	96	123	151	181	213	245	279	314
OSCAR 1200	63	85	109	135	161	189	218	248	279
OSCAR 1000	55	75	95	118	141	165	190	217	244
OSCAR 900	51	69	88	108	129	152	175	199	223
OSCAR TONDO 2000	93	126	161	198	237	278	321	365	411
OSCAR TONDO 1800	86	116	148	183	219	257	297	337	379
OSCAR TONDO 1600	78	106	136	167	200	235	271	308	347
OSCAR TONDO 1400	71	96	123	151	181	213	245	279	314
OSCAR TONDO 1200	63	85	109	135	161	189	218	248	279
OSCAR TONDO 1000	55	75	95	118	141	165	190	217	244
OSCAR TONDO 900	51	69	88	108	129	152	175	199	223

The expected heat output is obtained by observing the distances specified below:

≥ cm 2-3 from the wall

≥ cm 10 from the floor

≥ cm 10 from the shelf or window-sills

In order to prevent the thermal expansion of the system from causing noise in correspondence with the heaters, it is advisable to use plastic brackets to support the radiators (items A004, A025, A027 or A029 in our catalogue).

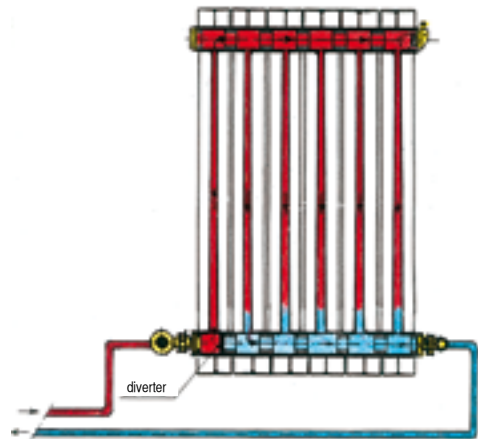


CORRECT INSTALLATION, USE AND MAINTENANCE INSTRUCTIONS

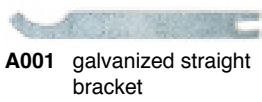
- * Oscar and Oscar Tondo radiators can be used in all hot water or vapour heating installations up to 110°C with a working pressure up to 1600 K Pascal -16 bar.
- * They can be installed in systems using iron, copper or thermoplastic pipes.
- * In order to protect the system from scaling and corrosion processes, which affect radiators, pipes and boilers, the INI-CTI 8065 Standard provides for the treatment of the filling water of the system, without distinguishing between aluminium, steel or cast iron.
- * Among the various products to be added to the system in accordance with the abovementioned UNI Standard, there is a specific one for aluminium, an aliphatic film-forming polyamine marked under the name Cillit-HS 23 Al or similar in the quantity recommended by the manufacturer. However, it is useful to check the pH value of the water, which should preferably be between 6.5 and 8.
- * Automatic or manual air vent valves must be installed on radiators.
- * **Avoid complete closure of the radiator shut-off valves in order to allow any gas that there might be inside the same to escape through the automatic air vent valve, which is mandatory in any heating system, thus avoiding possible overpressure that could damage the radiators.**
- * **If one or more batteries are to be excluded from the circuit, an automatic air vent must be fitted to each battery.**
- * To ensure lasting protection of painting, radiators must not be stored in very wet or damp environments before and after installation such as inside showers, saunas, turkish baths, near swimming pools etc.
Paint peeling off on parts of the radiator could cause the formation of aluminium oxide and have the paint completely peeled off. Do not use porous clay humidifiers.
- * For the external cleaning of the radiator and surfaces near the radiator, it is necessary to avoid the use of abrasive or chemically corrosive/aggressive products of any nature, as the use of water and neutral detergent is sufficient.
Performing the operation when the radiators are cold to maintain the original brilliance of the paint over time.
- * Do not place weights and/or objects on the radiators. Do not use radiators for any purpose other than heating elements (e.g.: as a support system, as steps, as support for furniture or objects).

IMPORTANT

- * If the Oscar and Oscar Tondo radiators are connected hydraulically with the connections at the bottom on opposite sides, it is useful to insert a diverter (art. A022) between the first and the second section.
This prevents abnormal circulation of the thermal fluid, thus guaranteeing maximum performance of the heater.



ACCESSORIES



A001 galvanized straight bracket



ANGLE BRACKET

A003 galvanized
A004 white plastic



A025 170 mm white expansion plug bracket white or special colour (pair)



A027 universal brackets white blister pack (pair)



A029 square brackets white blister pack (pair)



A024 O-ring gasket for Oscar, Oscar Tondo



A088 silicone gasket for plug and reducer for 900 to 2000 mm radiators



A017 RAL 9010 white marker



A237 white handy grip
A238 chrome handy grip



TOWEL RAILS

A201 48 cm white
A202 48 cm chrome
A207 32 cm white
A208 32 cm chrome



SIDE PANEL
RAL 9010 WHITE
A061 mod. 1000
A062 mod. 1200
A063 mod. 1400
A064 mod. 1600
A065 mod. 1800
A066 mod. 2000



A022 diverter for Oscar, Oscar Tondo



A010 RAL 9010 white or special colour spray can



REDUCER KIT WITH SILICONE GASKETS AND ADJUSTABLE VALVE

A044 3/8" for 900 to 2000 mm radiators, white or chrome
A047 1/2" for 900 to 2000 mm radiators, white, chrome or special colours
A049 3/4" for 900 to 2000 mm radiators, white or chrome



REDUCER KIT WITH SILICONE GASKETS AND VALVE WITH HANDWHEEL

A191 3/8" for 900 to 2000 mm, white
A193 1/2" for 900 to 2000 mm, white



A018 Cillit HS 23 Combi liquid



A079 hex key with lever
A080 hex key 500 mm
A081 hex key 800 mm



1" BLIND PLUG OR REDUCER
A020 white with silicone gasket
A089 white with silicone gasket for 900 to 2000 mm radiators



A023 1" nipples 30 mm for Oscar, Oscar Tondo



A013 1" float type air vent valve right or left



MANUAL AIR VENT VALVE

A012 1/8"
A039 1/4"
A040 3/8"
A050 1/2"



A041 1/2" adjustable manual air vent valve - white



A042 1/2" automatic air vent valve - chrome



A038 1/2" adjustable manual air vent valve - chrome



A019 plug wrench



cod. 10
white glossy
RAL 9010



cod. 11
white sand
RAL 9016



cod. 12
white matt



cod. 01
ivory glossy
RAL 1013



cod. 05
metallic matt
beige



cod. 06
metallic matt
quartz



cod. 07
metallic matt
dark grey



cod. 08
metallic matt
silver grey



cod. 09
metallic matt
rust



cod. 14
black matt

standard colour | **special colours** see the Colour Card

The colours are indicative. For technical printing reasons, it is not possible to faithfully reproduce the paints used. The colour of the products supplied may differ from that shown in this catalogue.



GLOBAL di Fardelli Ottorino & C. s.r.l.

24060 ROGNO (BG) ITALIA • via Rondinera, 51
tel. ++39 035977111 • fax ++39 035977110
globalradiatori.it • info@globalradiatori.it

